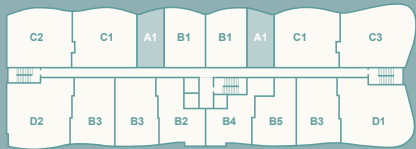


RESIDENCE  
A1

STUDIO  
1 BATHROOM

INTERIOR  
517 SF | 48 M<sup>2</sup>

TERRACE  
54 SF | 5 M<sup>2</sup>

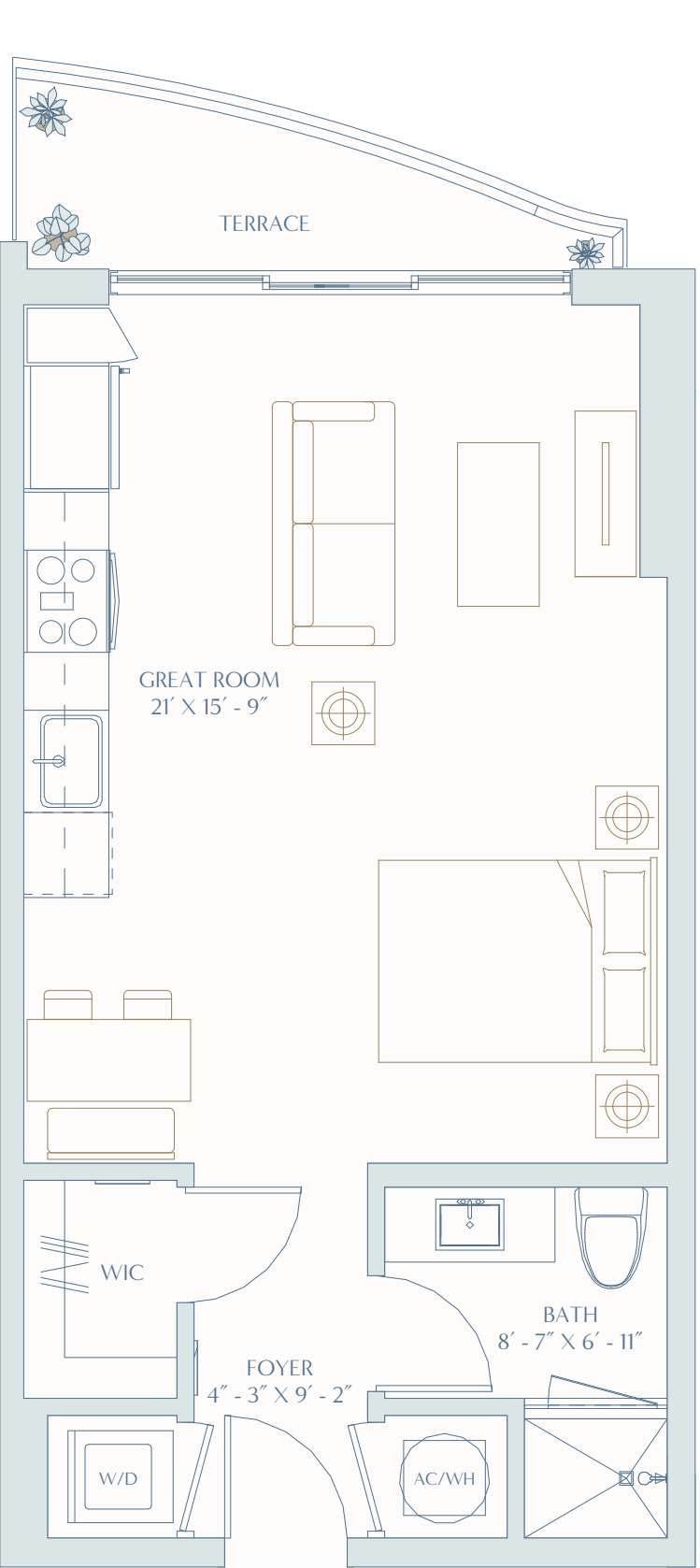


ONEHOLLYWOODRESIDENCES.COM

Developed By  
**STAR**  
DEVELOPERS GROUP

Exclusive Sales & Marketing By  
**FORTUNE**  
DEVELOPMENT  
SALES

Stated square footages and dimensions are measured to the exterior boundaries of the exterior walls and the centerline of interior demising walls and in fact vary from the square footage and dimensions that would be determined by using the description and definition of the "Unit" set forth in the Declaration (which generally only includes the interior airspace between the perimeter walls and excludes all interior structural components and other common elements). This method is generally used in sales materials and is provided to allow a prospective buyer to compare the Units with units in other condominium projects that utilize the same method. Measurements of rooms set forth on this floor plan are generally taken at the farthest points of each given room (as if the room were a perfect rectangle), without regard for any cutouts or variations. Accordingly, the area of the actual room will typically be smaller than the product obtained by multiplying the stated length and width. All dimensions are estimates which will vary with actual construction, and all floor plans, specifications and other development plans are subject to change and will not necessarily accurately reflect the final plans and specifications for the development. All depictions of appliances, counters, soffits, floor coverings and other matters of detail, including, without limitation, items of finish and decoration, are conceptual only and are not necessarily included in each Unit. EQUAL HOUSING OPPORTUNITY.





# RESIDENCE B1

1 BEDROOMS  
2 BATHROOMS

INTERIOR  
781 SF | 73 M<sup>2</sup>

TERRACE  
88 SF | 8 M<sup>2</sup>



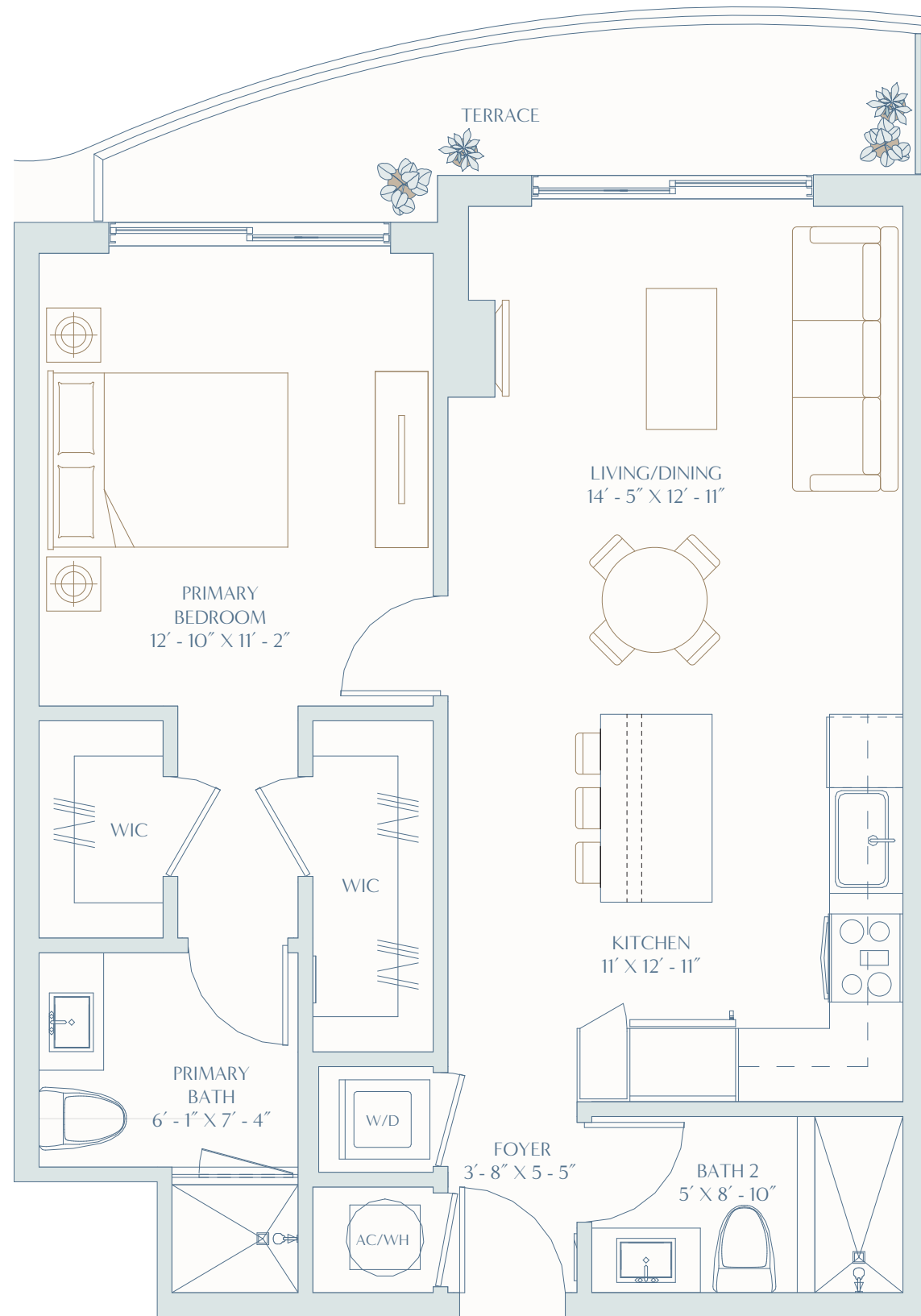
ONEHOLLYWOODRESIDENCES.COM

Developed By

**STAR**  
DEVELOPERS GROUP

Exclusive Sales & Marketing By

**FORTUNE**  
DEVELOPMENT  
— SALES —

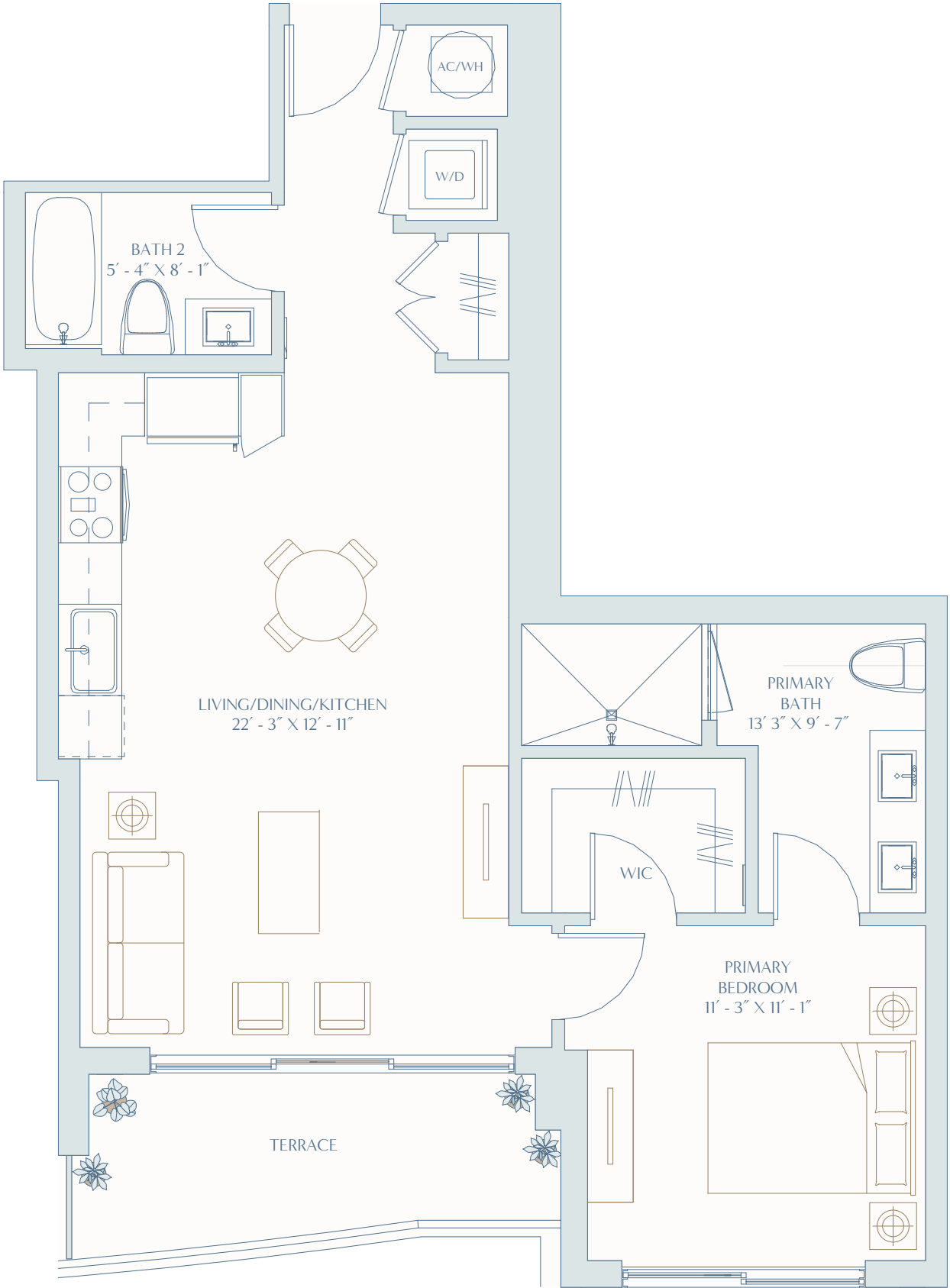


RESIDENCE  
B2

1 BEDROOM  
2 BATHROOMS

INTERIOR  
798 SF | 94 M<sup>2</sup>

TERRACE  
91 SF | 9 M<sup>2</sup>



ONEHOLLYWOODRESIDENCES.COM

Developed By  
**STAR**  
DEVELOPERS GROUP

Exclusive Sales & Marketing By  
**FORTUNE**  
DEVELOPMENT  
SALES

Stated square footages and dimensions are measured to the exterior boundaries of the exterior walls and the centerline of interior demising walls and in fact vary from the square footage and dimensions that would be determined by using the description and definition of the "Unit" set forth in the Declaration (which generally only includes the interior airspace between the perimeter walls and excludes all interior structural components and other common elements). This method is generally used in sales materials and is provided to allow a prospective buyer to compare the Units with units in other condominium projects that utilize the same method. Measurements of rooms set forth on this floor plan are generally taken at the farthest points of each given room (as if the room were a perfect rectangle), without regard for any cutouts or variations. Accordingly, the area of the actual room will typically be smaller than the product obtained by multiplying the stated length and width. All dimensions are estimates which will vary with actual construction, and all floor plans, specifications and other development plans are subject to change and will not necessarily accurately reflect the final plans and specifications for the development. All depictions of appliances, counters, soffits, floor coverings and other matters of detail, including, without limitation, items of finish and decoration, are conceptual only and are not necessarily included in each Unit. EQUAL HOUSING OPPORTUNITY.

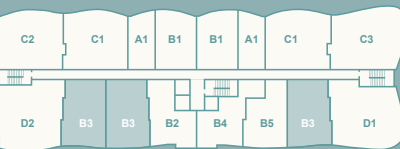


RESIDENCE  
B3

1 BEDROOM + DEN  
2 BATHROOMS

INTERIOR  
945 SF | 88 M<sup>2</sup>

TERRACE  
135 SF | 13 M<sup>2</sup>



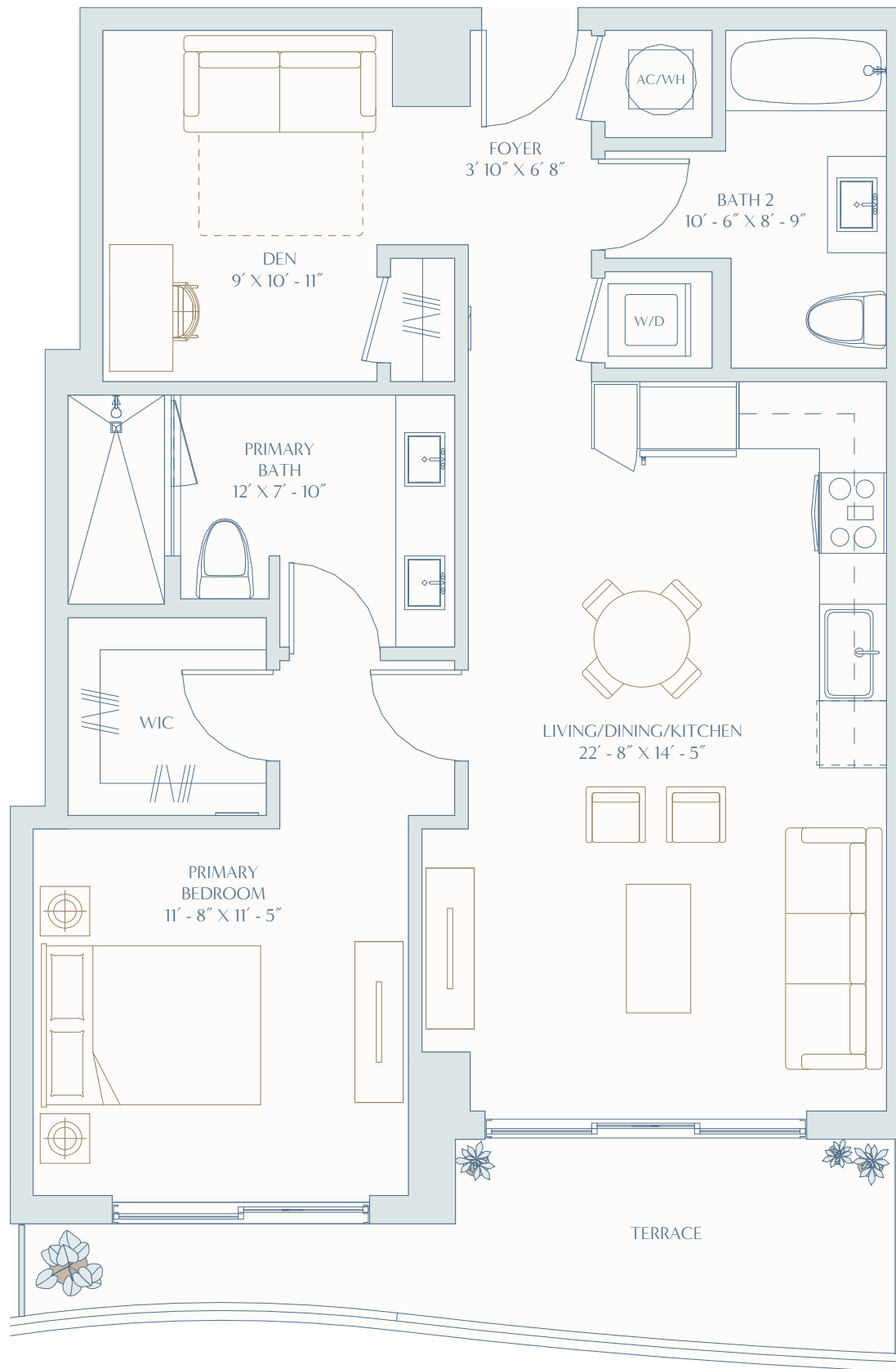
ONEHOLLYWOODRESIDENCES.COM

Developed By



STAR  
DEVELOPERS GROUP

Exclusive Sales & Marketing By  
**FORTUNE**  
DEVELOPMENT  
— SALES —

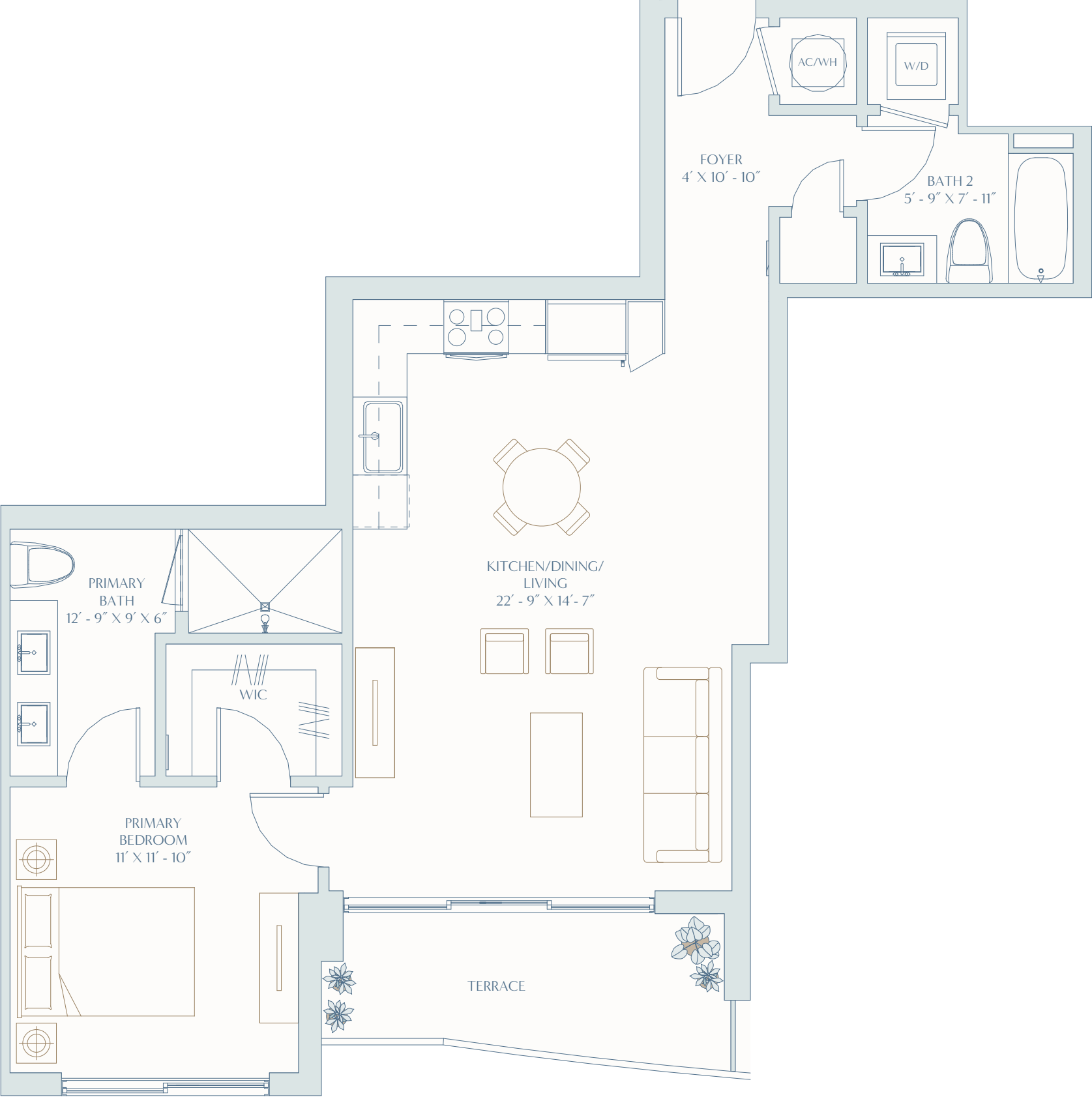


RESIDENCE  
B4

1 BEDROOM  
2 BATHROOMS

INTERIOR  
874 SF | 81 M<sup>2</sup>

TERRACE  
90 SF | 8 M<sup>2</sup>



ONEHOLLYWOODRESIDENCES.COM

Developed By  
**STAR**  
DEVELOPERS GROUP

Exclusive Sales & Marketing By  
**FORTUNE**  
DEVELOPMENT  
SALES

Stated square footages and dimensions are measured to the exterior boundaries of the exterior walls and the centerline of interior demising walls and in fact vary from the square footage and dimensions that would be determined by using the description and definition of the "Unit" set forth in the Declaration (which generally only includes the interior airspace between the perimeter walls and excludes all interior structural components and other common elements). This method is generally used in sales materials and is provided to allow a prospective buyer to compare the Units with units in other condominium projects that utilize the same method. Measurements of rooms set forth on this floor plan are generally taken at the farthest points of each given room (as if the room were a perfect rectangle), without regard for any cutouts or variations. Accordingly, the area of the actual room will typically be smaller than the product obtained by multiplying the stated length and width. All dimensions are estimates which will vary with actual construction, and all floor plans, specifications and other development plans are subject to change and will not necessarily accurately reflect the final plans and specifications for the development. All depictions of appliances, counters, soffits, floor coverings and other matters of detail, including, without limitation, items of finish and decoration, are conceptual only and are not necessarily included in each Unit. EQUAL HOUSING OPPORTUNITY.

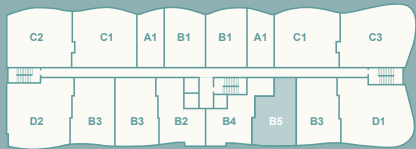


RESIDENCE  
B5

1 BEDROOM  
2 BATHROOMS

INTERIOR  
808 SF | 75 M<sup>2</sup>

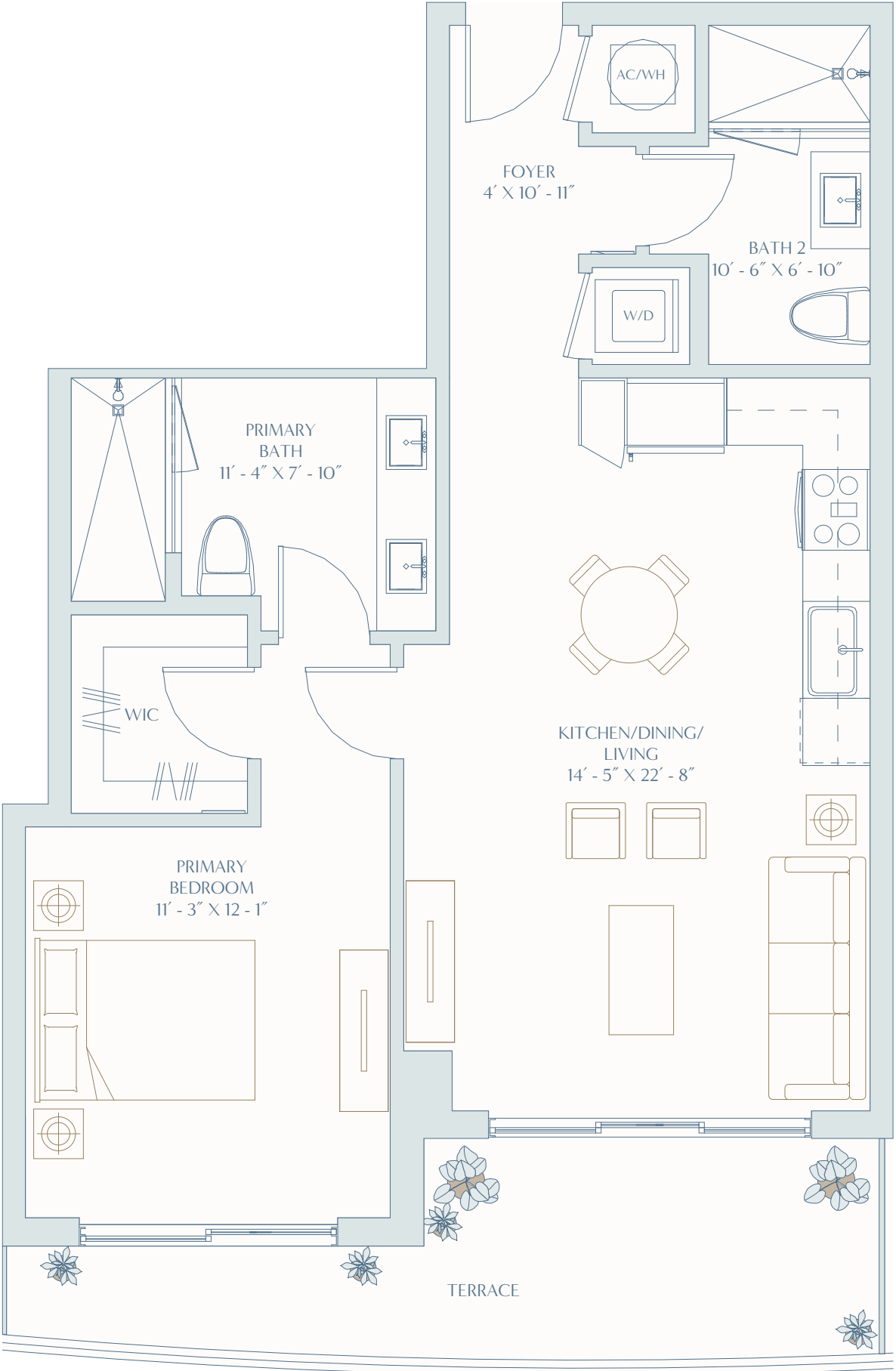
TERRACE  
152 SF | 14 M<sup>2</sup>



ONEHOLLYWOODRESIDENCES.COM



Stated square footages and dimensions are measured to the exterior boundaries of the exterior walls and the centerline of interior demising walls and in fact vary from the square footage and dimensions that would be determined by using the description and definition of the "Unit" set forth in the Declaration (which generally only includes the interior airspace between the perimeter walls and excludes all interior structural components and other common elements). This method is generally used in sales materials and is provided to allow a prospective buyer to compare the Units with units in other condominium projects that utilize the same method. Measurements of rooms set forth on this floor plan are generally taken at the farthest points of each given room (as if the room were a perfect rectangle), without regard for any cutouts or variations. Accordingly, the area of the actual room will typically be smaller than the product obtained by multiplying the stated length and width. All dimensions are estimates which will vary with actual construction, and all floor plans, specifications and other development plans are subject to change and will not necessarily accurately reflect the final plans and specifications for the development. All depictions of appliances, counters, soffits, floor coverings and other matters of detail, including, without limitation, items of finish and decoration, are conceptual only and are not necessarily included in each Unit. EQUAL HOUSING OPPORTUNITY.

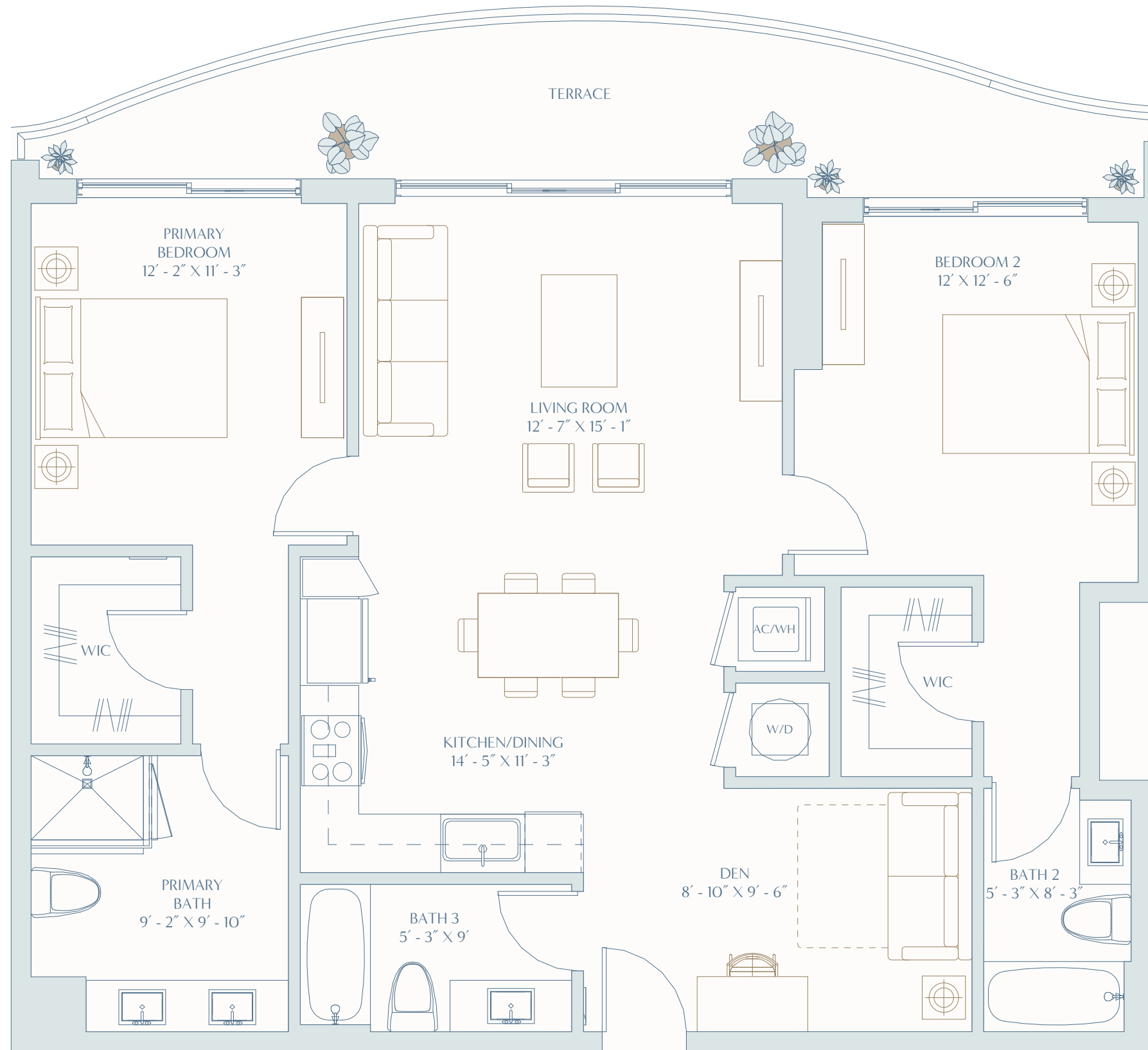


# RESIDENCE C1

2 BEDROOMS + DEN  
3 BATHROOMS

INTERIOR  
1,212 SF | 113 M<sup>2</sup>

TERRACE  
195 SF | 18 M<sup>2</sup>



ONEHOLLYWOODRESIDENCES.COM

Developed By  
**STAR**  
DEVELOPERS GROUP

Exclusive Sales & Marketing By  
**FORTUNE**  
DEVELOPMENT  
SALES

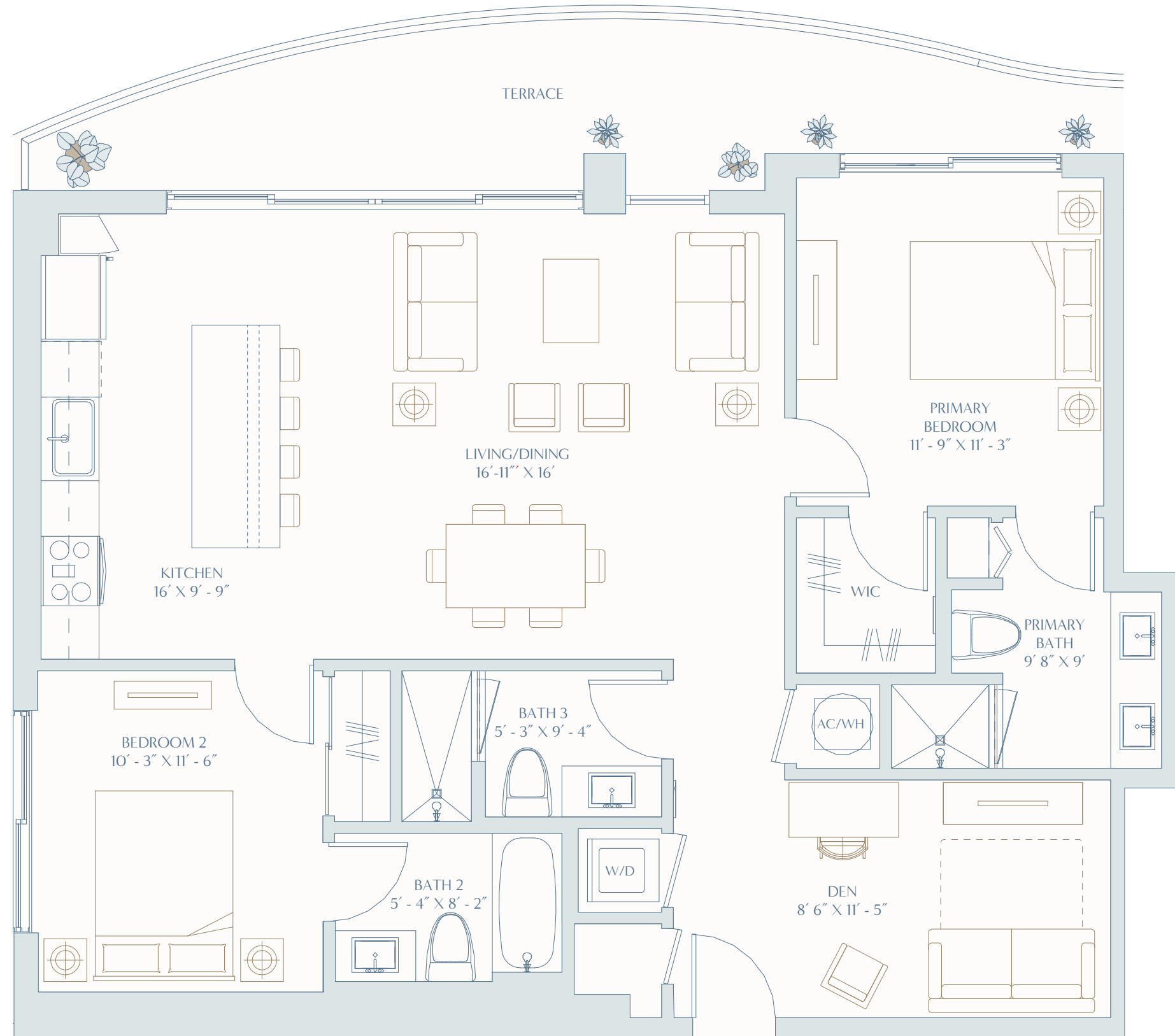
Stated square footages and dimensions are measured to the exterior boundaries of the exterior walls and the centerline of interior demising walls and in fact vary from the square footage and dimensions that would be determined by using the description and definition of the "Unit" set forth in the Declaration (which generally only includes the interior airspace between the perimeter walls and excludes all interior structural components and other common elements). This method is generally used in sales materials and is provided to allow a prospective buyer to compare the Units with units in other condominium projects that utilize the same method. Measurements of rooms set forth on this floor plan are generally taken at the farthest points of each given room (as if the room were a perfect rectangle), without regard for any cutouts or variations. Accordingly, the area of the actual room will typically be smaller than the product obtained by multiplying the stated length and width. All dimensions are estimates which will vary with actual construction, and all floor plans, specifications and other development plans are subject to change and will not necessarily accurately reflect the final plans and specifications for the development. All depictions of appliances, counters, soffits, floor coverings and other matters of detail, including, without limitation, items of finish and decoration, are conceptual only and are not necessarily included in each Unit. EQUAL HOUSING OPPORTUNITY.

# RESIDENCE C2

2 BEDROOMS + DEN  
3 BATHROOMS

INTERIOR  
1,220 SF | 113 M<sup>2</sup>

TERRACE  
196 SF | 18 M<sup>2</sup>



ONEHOLLYWOODRESIDENCES.COM

Developed By  
**STAR**  
DEVELOPERS GROUP

Exclusive Sales & Marketing By  
**FORTUNE**  
DEVELOPMENT  
SALES

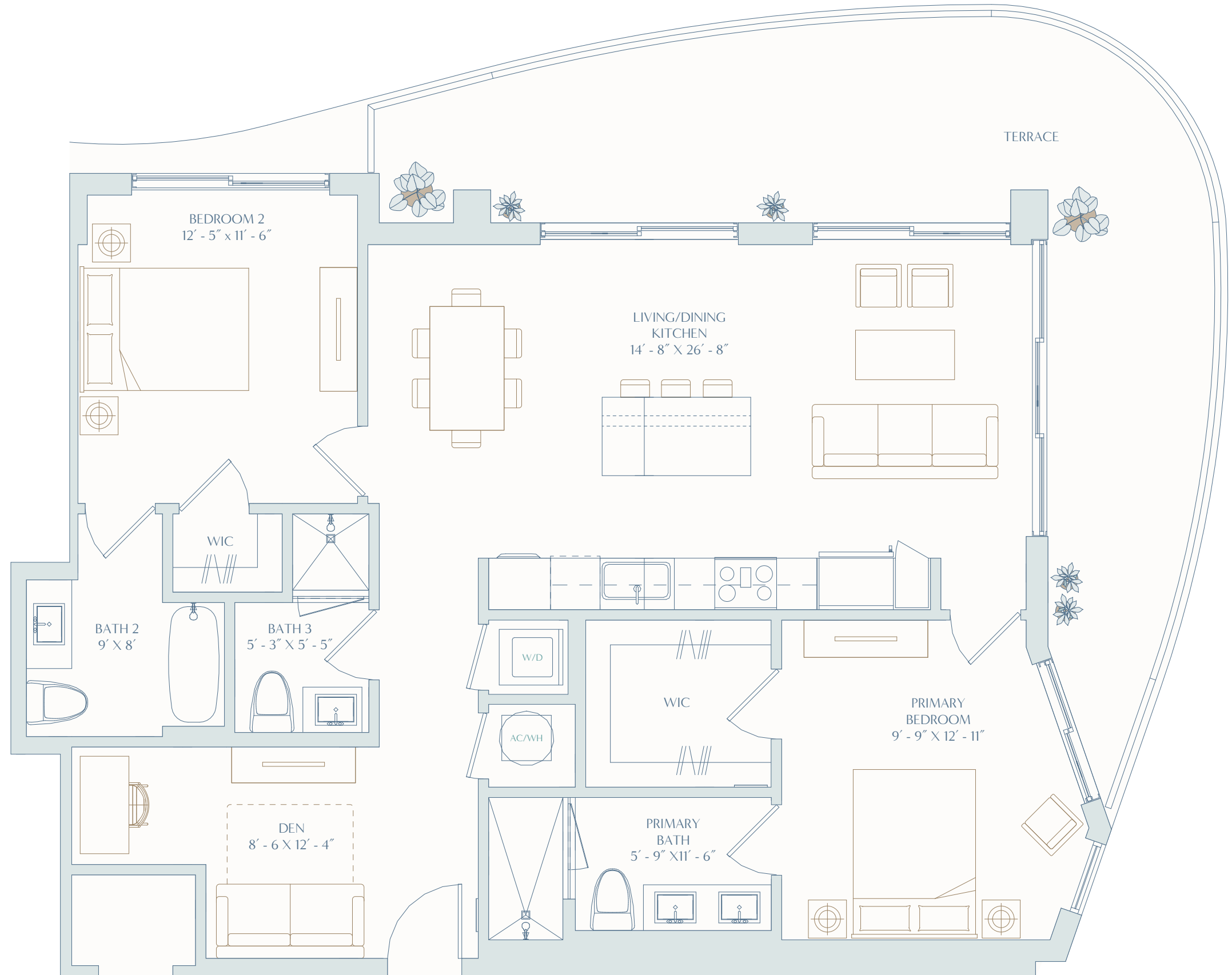
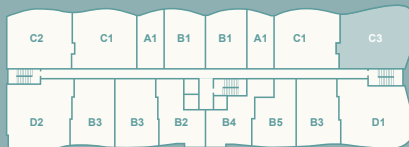
Stated square footages and dimensions are measured to the exterior boundaries of the exterior walls and the centerline of interior demising walls and in fact vary from the square footage and dimensions that would be determined by using the description and definition of the "Unit" set forth in the Declaration (which generally only includes the interior airspace between the perimeter walls and excludes all interior structural components and other common elements). This method is generally used in sales materials and is provided to allow a prospective buyer to compare the Units with units in other condominium projects that utilize the same method. Measurements of rooms set forth on this floor plan are generally taken at the farthest points of each given room (as if the room were a perfect rectangle), without regard for any cutouts or variations. Accordingly, the area of the actual room will typically be smaller than the product obtained by multiplying the stated length and width. All dimensions are estimates which will vary with actual construction, and all floor plans, specifications and other development plans are subject to change and will not necessarily accurately reflect the final plans and specifications for the development. All depictions of appliances, counters, soffits, floor coverings and other matters of detail, including, without limitation, items of finish and decoration, are conceptual only and are not necessarily included in each Unit. EQUAL HOUSING OPPORTUNITY.

# RESIDENCE C3

2 BEDROOMS + DEN  
3 BATHROOMS

INTERIOR  
1,235 SF | 114 M<sup>2</sup>

TERRACE  
406 SF | 37 M<sup>2</sup>



ONEHOLLYWOODRESIDENCES.COM

Developed By  
**STAR**  
DEVELOPERS GROUP

Exclusive Sales & Marketing By  
**FORTUNE**  
DEVELOPMENT  
SALES

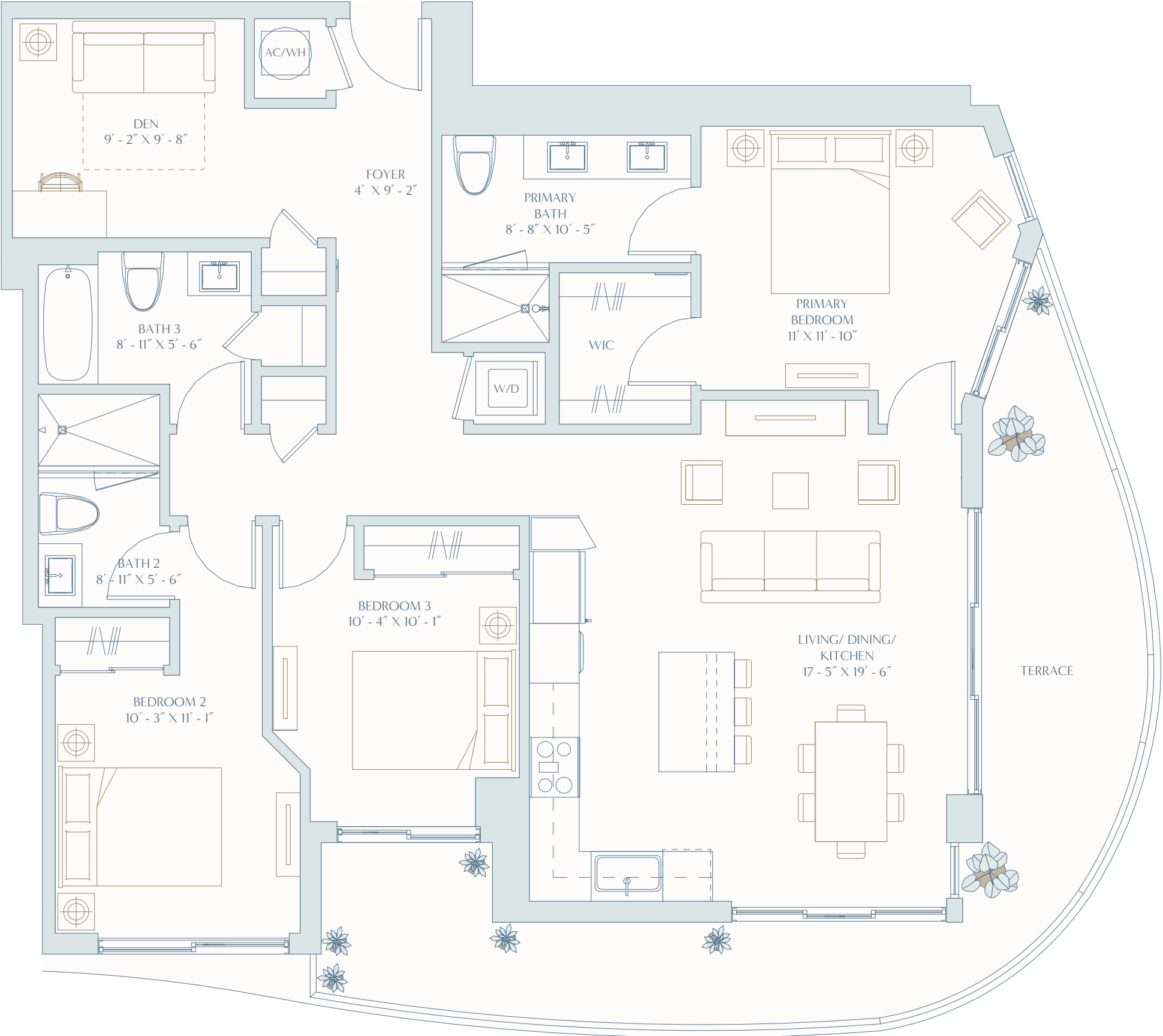
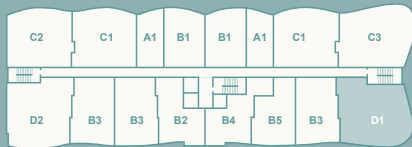
Stated square footages and dimensions are measured to the exterior boundaries of the exterior walls and the centerline of interior demising walls and in fact vary from the square footage and dimensions that would be determined by using the description and definition of the "Unit" set forth in the Declaration (which generally only includes the interior airspace between the perimeter walls and excludes all interior structural components and other common elements). This method is generally used in sales materials and is provided to allow a prospective buyer to compare the Units with units in other condominium projects that utilize the same method. Measurements of rooms set forth on this floor plan are generally taken at the farthest points of each given room (as if the room were a perfect rectangle), without regard for any cutouts or variations. Accordingly, the area of the actual room will typically be smaller than the product obtained by multiplying the stated length and width. All dimensions are estimates which will vary with actual construction, and all floor plans, specifications and other development plans are subject to change and will not necessarily accurately reflect the final plans and specifications for the development. All depictions of appliances, counters, soffits, floor coverings and other matters of detail, including, without limitation, items of finish and decoration, are conceptual only and are not necessarily included in each Unit. EQUAL HOUSING OPPORTUNITY.

RESIDENCE D1

3 BEDROOMS + DEN  
3 BATHROOMS

INTERIOR  
1,425 SF | 132 M<sup>2</sup>

TERRACE  
320 SF | 30 M<sup>2</sup>

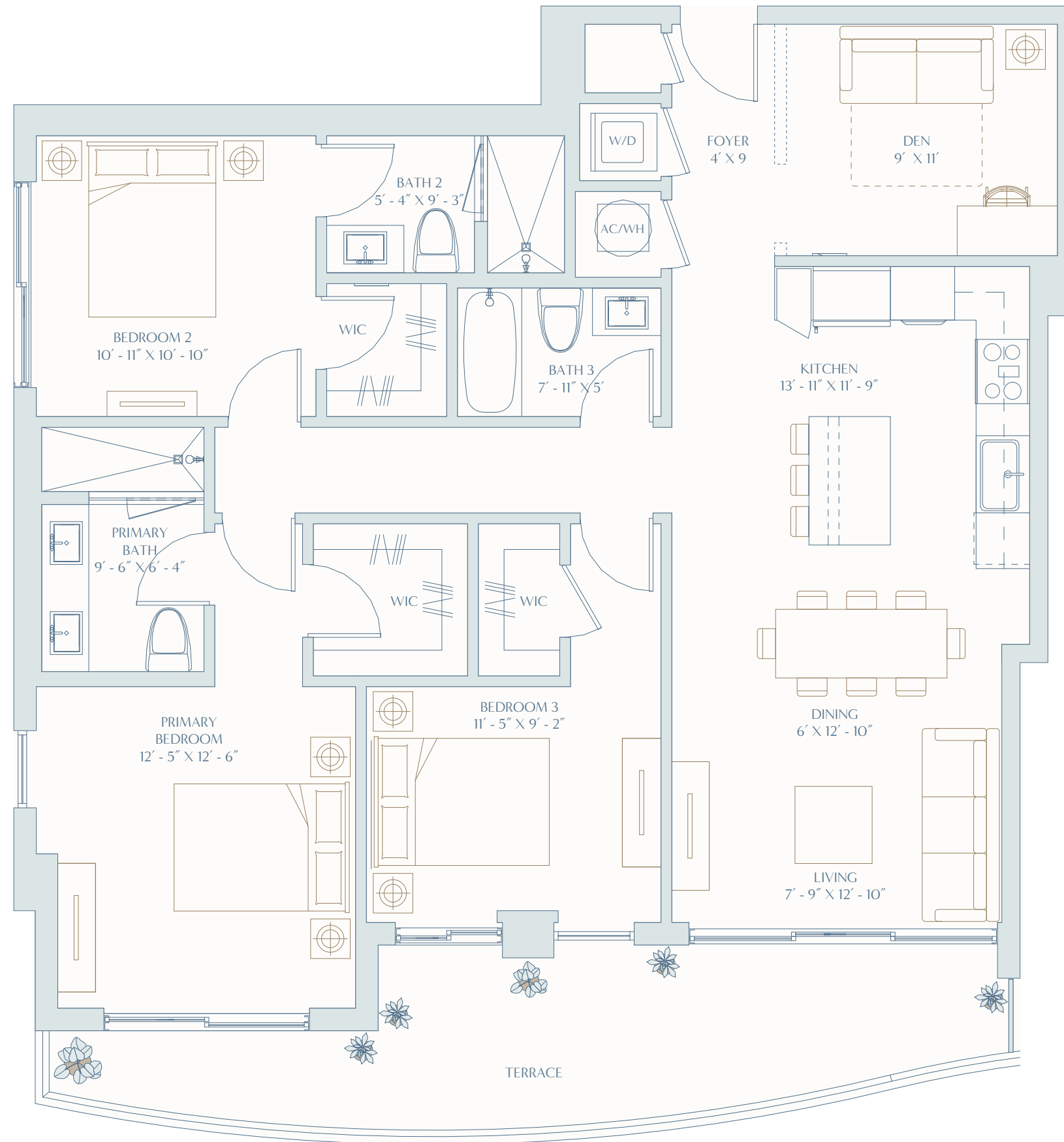
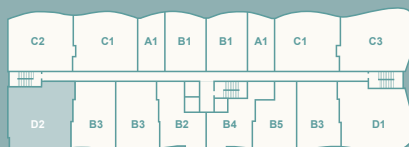


# RESIDENCE D2

3 BEDROOMS + DEN  
3 BATHROOMS

INTERIOR  
1,400 SF | 130 M<sup>2</sup>

TERRACE  
207 SF | 19 M<sup>2</sup>



ONEHOLLYWOODRESIDENCES.COM

Developed By  
**STAR**  
DEVELOPERS GROUP

Exclusive Sales & Marketing By  
**FORTUNE**  
DEVELOPMENT  
SALES

Stated square footages and dimensions are measured to the exterior boundaries of the exterior walls and the centerline of interior demising walls and in fact vary from the square footage and dimensions that would be determined by using the description and definition of the "Unit" set forth in the Declaration (which generally only includes the interior airspace between the perimeter walls and excludes all interior structural components and other common elements). This method is generally used in sales materials and is provided to allow a prospective buyer to compare the Units with units in other condominium projects that utilize the same method. Measurements of rooms set forth on this floor plan are generally taken at the farthest points of each given room (as if the room were a perfect rectangle), without regard for any cutouts or variations. Accordingly, the area of the actual room will typically be smaller than the product obtained by multiplying the stated length and width. All dimensions are estimates which will vary with actual construction, and all floor plans, specifications and other development plans are subject to change and will not necessarily accurately reflect the final plans and specifications for the development. All depictions of appliances, counters, soffits, floor coverings and other matters of detail, including, without limitation, items of finish and decoration, are conceptual only and are not necessarily included in each Unit. EQUAL HOUSING OPPORTUNITY.